



**2 Bed
House - Mid
Terrace
Weighton Road**

**Asking price
£425,000
Freehold**

- Two bedrooms
- Bright lounge
- Kitchen-diner
- Central heating on ground floor
- UPVC double glazing
- Well maintained rear garden
- Ideal family home
- Chain Free
- Close to transport



37 Weighon Road
London
SE20 8TN

Situated in Weighon Road in Penge, this mid-terrace house presents an exceptional opportunity for those seeking a comfortable home in a vibrant South London setting. Spanning 753 square feet, this well presented property, built in 1970, features two bedrooms and a modern family bathroom, making it ideal for professionals, couples, or small families.

Upon entering, you are greeted by a welcoming front lounge that exudes brightness and warmth, providing a perfect space for relaxation or entertaining guests. The heart of the home lies in the contemporary kitchen-diner. This generous area not only facilitates cooking but also offers ample room for a dining table, making it an inviting space for social gatherings.

The upstairs layout includes two bedrooms, ensuring comfort and privacy, while the additional ground-floor WC enhances convenience for residents and visitors alike.

This property is convenient to Penge High Street, where a variety of shops and eateries await. Nature enthusiasts will appreciate the proximity to Crystal Palace Park, and with both Penge East and Penge West stations nearby, commuting to central London is effortless. This delightful home truly encapsulates the essence of modern living in a thriving community, making it a must-see for anyone looking to settle in this desirable area.

Entrance

Front door. Carpet as laid.

Reception room

49'2" x 29'6" x 29'6" x 32'9"

Window. Carpet as laid. Door to garden

Kitchen/diner

16'5 x 7'1

Window. Range of wall and base units with work surfaces over. Stainless steel single drainer sink unit. Vinyl flooring. Space for washing machine and fridge/freezer. . Vinyl flooring.

Landing

Balustrade. Carpet as laid.

Bedroom one

16'7 x 9'8

Window. Carpet as laid.

Bedroom Two

13'9 x 9'10

Window. Carpet as laid.

Bathroom

Window. Panelled bath with mixer taps. Wash hand basin. Vinyl flooring.

Separate WC

Window. Low level wc. Vinyl flooring.

Garden

19'11 x 16'4

Laid to lawn.

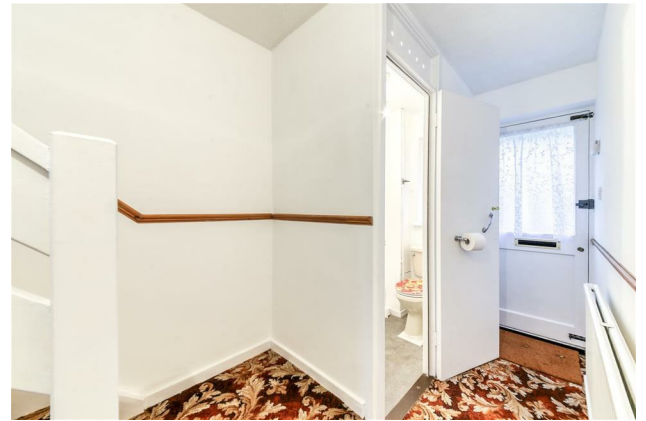
Tenure

"We are advised by the vendor(s) that the tenure is Freehold".

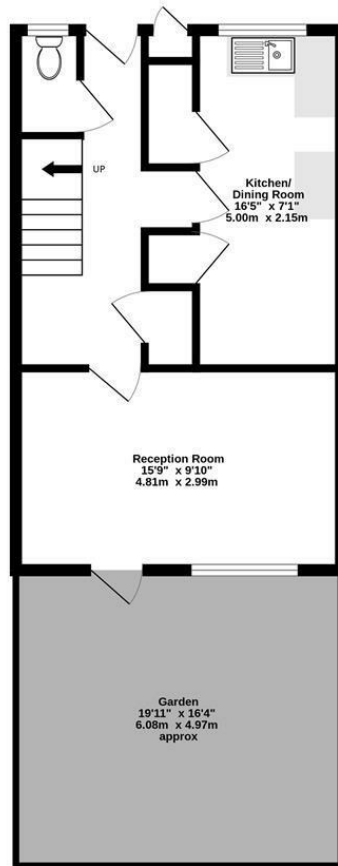
Authority

London Borough Of Bromley. Band D £2042.46

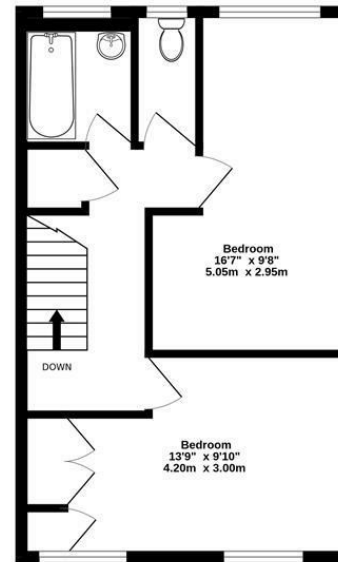




Ground Floor
414 sq.ft. (38.4 sq.m.) approx.



1st Floor
416 sq.ft. (38.6 sq.m.) approx.



Weighton Road, London, SE20

TOTAL FLOOR AREA: 829 sq.ft. (77.1 sq.m.) approx.
Measurements are approximate. Not to scale. Illustrative purposes only.
Made with Metropix 5/2025

CONTACT

5 High Street
London
SE25 6EP

E: Info@northwoods.co.uk
T: 020 8653 3377
northwoods.co.uk

